

# NUUO NVR / IP+ Series

## 64CH PC Based NVR

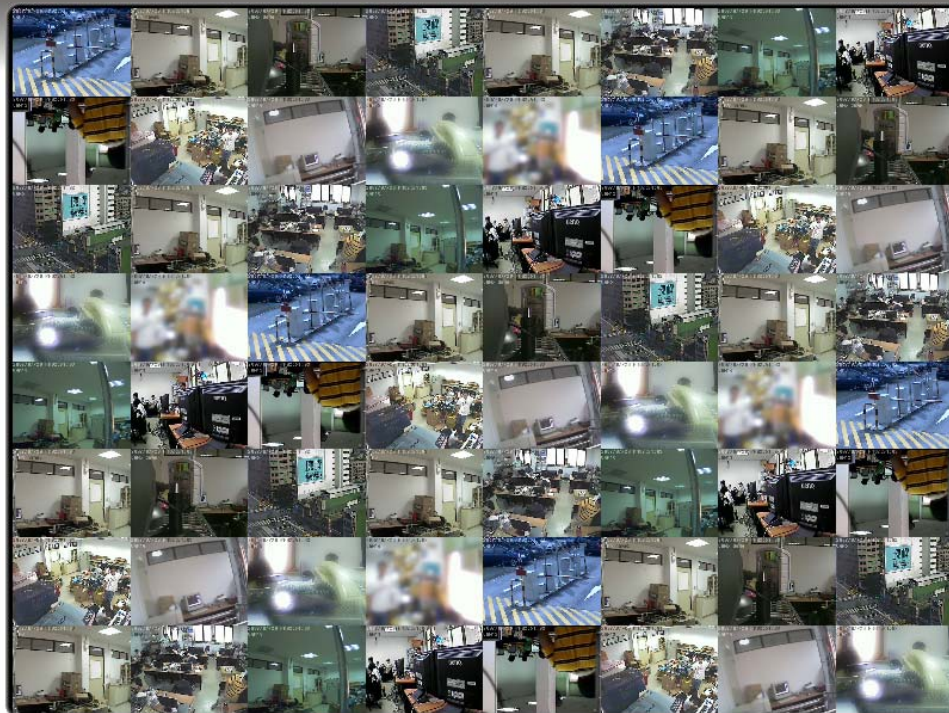


## Support H.264 and Megapixel Camera

- Plate-forme ouverte supportant 36 marques
- Supporte POS
- Supporte Triple Moniteurs
- Up to 128 CH remote live view
- Supporte cartographie
- Supportée par NUUO CMS
- Supporte 25 langues
- Support Transcode

IP+ Series	SCB-IP+04	SCB-IP+08	SCB-IP+12	SCB-IP+16	SCB-IP+25	SCB-IP+32	SCB-IP+36	SCB-IP+64
Max de Cameras	4	8	12	16	25	32	36	64

Recording FPS	30FPS		Audio Support		Unlimited / 2 way audio			
Compression	H.264 / MPEG4 / M-JPEG / MxPEG		Supported OS		Windows 2003 / XP / Vista			



2007/07/20  
14:51:02

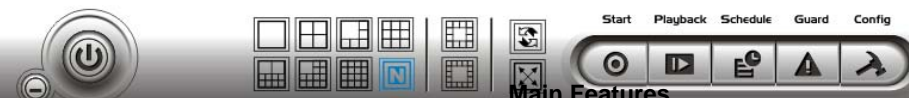
Free:4.6GB

SET MENU GO

20000 +



PATROL FOCUS



**Main Features**

- Support Megapixel cameras, IP cameras and video servers
- PTZ reaction presets and distance operations
- Digital PTZ and Multi-dynamics viewer
- Triple Monitor Display ( two for live video and one for playback recording video)
- Smart detection of 6 different camera events
- 10 Immediate reaction for event detection
- Counting Application
- I/O Devices Integration
- Multifunctional Playback System with Intelligent Search
- Remote live viewer, playback backup, IO control, desktop configuration
- Alarm source of NUUO Central Management system
- Compatible with Joystick
- Most Friendly Graphic User Interface
- E-Map
- Transcode
- Watermark
- Database rebuild tool
- With NUUO SCB-C31 box to integrate POS and Cash Registers.

**Specifications**

**Video Feature**

- Triple Monitor - Enable maximum 64 channels with two screens to show live video and viewer recording video on third monitor.
- Audio & video recording in synchronization.

- Support several signal input - IP camera and Video Server.
- Transcode- Live viewing and recording in different quality.
- **Live Display**
  - Display Maximum 64 channels under several modes & full screen.
  - Dual screen Support:
    - Focus on important area : Users could set one screen to watch general cameras and the other one to watch important cameras.
    - Live view and playback at the same time : Users could set one screen to watch live view and the other one to playback.
    - Spot monitor application : Detected event can popup in the secondary monitor while the primary one is playing live view video.
  - Adjustable monitor windows- Support 1/4/6/9/10/13/16/25/36/49/64 divided windows with full screen and display in turns function.
  - Multiple Show - Support to view in the different divisions from single video resource.
  - Support 1024x768, 1200x900, 1280x1024, and 1600x1200 screen resolution.
- **PTZ control**
  - PTZ Preset point – Save the definition of PTZ camera lens as a preset point and allow camera quickly move to the location.
  - Patrol – Allow camera to patrol around the route combined by preset points.
  - Digital PTZ - Support to focus on anywhere you want to highlight of the video.
    - Digital PTZ and Multiple Show support to focus on everywhere you want to highlight in the different divisions from single video resource.
- **Smart Detection**
  - Smart detection of 6 camera events, digital input event, up to 13 user defined POS event and 2 system events.
    - Camera Events :
      - General Motion
      - Missing Object
      - Foreign Object
      - Lose Focus
      - Camera Occlusion
      - Signal Lost
    - Signal Digital Input Event
    - System Event :
      - System alarm at Disk Space Exhausted
      - System alarm at System Health Unusual
  - Immediate reaction for event detection:
    - On Screen Display
    - Play Sound
    - Send E-mail
    - Phone Call
    - PTZ Preset Go
    - Signal Digital Output
    - Send a SMS message
    - Send to Central Server
    - Send Snapshot to FTP
    - Popup E-Map on Event
- **Recording and Schedule**
  - Video compression – MPEG4, M-JPEG, MxPEG and H.264.
  - Audio & video recording in synchronization.
  - Auto recycling when storage disk is full.

- Recording mode – Continuous record, record by event, record by digital input, record by motion, record by schedule, and manual record.
- Recording schedule – Record by daily, weekly, repeat schedule.
- Video and image could be saved in outer storage device such like DAS, NAS and SAN without any limitation if users want to increase it in the future.
- Watermark- Verification tool to check data security.

- **Playback & Search**

- Playback Maximum 16 channels under several modes & full screen.
- Intelligent search and smart search mode by event, area, cameras, date, time and log file.
- Administrator could set the path of recording data base without any limitation. Storage device could be expanded unlimited without any problem.
- Easily search the period of recording data and unusual event by clicking the corresponding button.
- Complete playback control: playback, backward playback, fast forward/backward playback.
- Digital zoom in for specific area.
- Export video to “AVI” and “ASF” file.
- Export single frame to “BMP, JPEG” file and print out.
- Back up video by burning to CDROM, DVD and into hard disk.
- Video enhancement – Visibility, sharpen, brightness, contract, grey scale.

- **Remote service**

- Live streaming
- Remote playback
- 3GPP Service
- Remote Desktop configuration
- Central management

- **Remote Application**

- Live Viewer
  - Multi-server connection
  - Up to 128 channels display
  - Support Multi-monitor
  - Flexible screen divisions - 1/4/6/9/10/13/16/25/36/49/64 divisions which support auto scan and group view functions
  - Multiple Show and digital PTZ - Highlight the chosen area in different divisions from single video resource
  - Transcode - Improve bandwidth utilization
  - E-Map
  - Remote I/O Control
  - Multi-Language
- Playback
  - 16 channels playback simultaneously
  - Smart Search
  - Remote Backup
  - Multi-Language
- Web-browser
  - Web-based client viewer
  - Up to 64channels live view and 16 channels playback
  - Multi-language
- PDA Viewer
  - Live Viewer
  - I/O control
  - PTZ control

- **Other**

- Counting application for certain object - The best function to count people or cars flow.

- Verification tool- Verifying whether the data was altered.
- Resource Management tool- Monitor system resource with Instant alarm notice
- User-friendly control interface - Without complicated control window, easily to use for everyone with basic computer knowledge.
- Administrator could auto login from a certain account, and enable add, edit and delete users without any limitation. Every user has own limits of authority.
- Only the users in the administrator group can exit Main Console.
- Execute recording, smart guard ...etc. in the background after logout system.
- Display bitrate of each camera to help manage bandwidth
- Available to watch the condition of connection such like Account, flow rate and IP address. Including information of remote control in order to analysis the data and to sort the responsibility.
- Log data: unusual event, system log, counting application can export to "xls" or "txt" file.
- Compatible with Joystick.
- DDNS function.
- 3GPP PDA/Mobile Handy view.
- E-Map.
- Database rebuild tool.
- With NUUO SCB-C31 box to integrate POS and Cash Registers.

### Specifications

<b>Model</b>	SCB-IP+ Series						
<b>IP Camera Input(s)</b>	4,8,12,16,25,32,36,64						
<b>Version</b>	3.2						
<b>IP Camera Brand(s) Supported</b>	ACTi	Arecont	Atlantis	Axis	Cisco	D-Link	Dynacolor
	Etrivision	EverFocus	Fine	Hitron	Icantek	IQinvision	JVC
	Level One	Linksys	Lorex	Lumenera	Mobotix	Moxa	Panasonic
	Pixord	Planet	Probe	Samsung	Seorim	Sony	Toshiba
	Truen	Vivotek	Zavio				
<b>Digital PTZ</b>	Supported in Live view and playback						
<b>Multiple Show</b>	Supported in Live view						
<b>Triple Monitor</b>	Enable maximum 64 channels with two screens to show live video and viewer recording video on third monitor.						
<b>Audio &amp; Video Recording</b>	Audio & video recording in synchronization.						
<b>Screen Division</b>	1/4/6/9/10/13/16/25/36/49/64 divided screen.						
<b>Compression Format</b>	MPEG-4;M-JPEG;MxPEG;H.264						
<b>Recording Type</b>	Continuous record, record by digital input, motion record, event recording, record by schedule, manual record						
<b>Playback Channels</b>	Playback Maximum 16 channels under several modes & full screen.						
<b>Playback control</b>	Playback, backward playback, fast forward/backward playback.						
<b>Auto Recycling Recording</b>	Auto recycling when storage disk is full.						
<b>Available I/O Function</b>	Supporting I/O Box						
<b>Available POS Device</b>	SCB-C31 RS232 to Ethernet Convertor						
<b>Hardware Watchdog</b>	N/A						

### System Minimum Requirements

<b>OS Supported</b>	Windows 2000 / Windows XP / Windows 2003/ Windows Vista
<b>CPU</b>	Pentium 4 – 2.8 GHz
<b>RAM</b>	512 MB
<b>HDD</b>	80 GB
<b>Mother-board</b>	Intel 945 or 965 chip, Intel Chipset recommended
<b>Display</b>	ATI Radeon 9200, nVIDIA GeForce FX-5200, Intel 945 / 965, or above (ATI recommended)

### Support Language

Chinese (Simplified )	Chinese (Traditional)	Czech	Danish
English	Farsi	Finnish	<b>French</b>
German	Greek	Hebrew	Hungarian
Italian	Japanese	Korean	Portuguese(Brazil)
Portuguese(Portugal)	Russian	Slovak	Spanish

Subject:

# NVR Specification

Part No.:

99.264.8B24.001

Rev.: 1

--	--	--	--

